

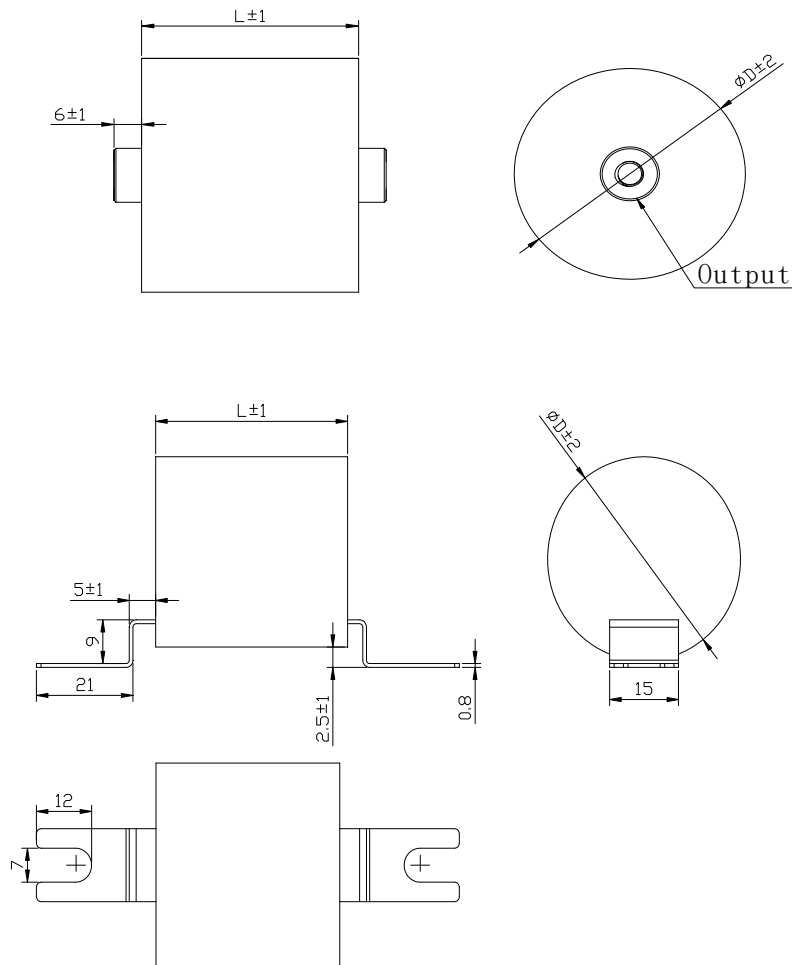
特点/ Features

- ◆ 聚丙烯薄膜介质 Polypropylene film
- ◆ 金属化聚丙烯薄膜 Metalized polypropylene film
- ◆ 具有自愈性 Self healing
- ◆ 低损耗，低自感 Low loss Low inductance
- ◆ 迈拉胶带,环氧树脂封装 (94-V0) Polyester tape wrapping. Epoxy fill (94-V0) ,
- ◆ 镀锡铜螺母 Tinned copper.screw

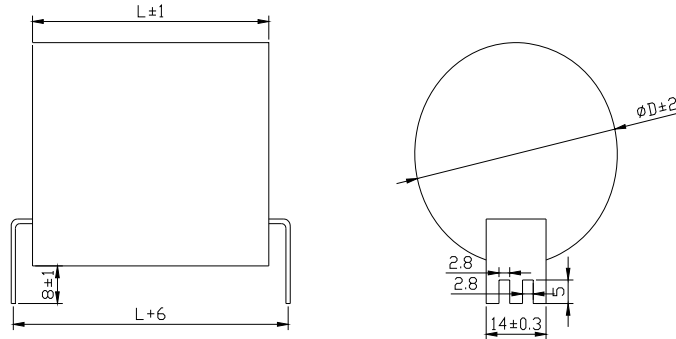
技术性能 / Specifications

引用标准	Reference standards :	IEC 61071-60068
使用温度范围	Opearing temperature range	-40 to + 85°C(max hotspot≤70°C)
储存温度	Storage temperature	-40 to + 85°C
容量范围	Capacitance range	13~300μF
额定电压	Rated Voltage:	600 to 1000Vdc
电容量偏差	Capacitance tolerance	± 5%(J) ± 10%(K)
绝缘电阻	Insulation resistance:	≥5,000s after 1 minute of electrification at 100Vdc (25 ±5°C)
极间耐电压	Test voltage between terminals :	1.5Un applied for 10s at 25±5°C
极壳电压	Test voltage between terminals and case :	3.0 KV 50Hz for 60 sec
预期寿命	Life expectancy :	100,000 hours at Un and 70°C

Outline drawing



STYE: N



STYE: H

常用规格技术参数 General Electrical data

Part Number	CAP μF	Dimension (mm)		du/dt v/μs	I _{rms} @25°C @10kHz	ESR@ 1.0kHz	Output insert
		L	D				
Un 400Vdc							
PLB600K30	30	40	45	45	27	1.8	M6
PLB600K50	50	50	50	32	30	2.0	M6
PLB600K80	80	50	62	32	40	1.5	M6
PLB600K100	100	60	60	22	35	2.0	M6
PLB600K150	150	60	75	22	48	1.5	M6
PLB600K200	200	110	60	10	35	3.0	M6
PLB600K300	300	110	72	10	48	2.1	M6
Un 800Vdc							
PLB800K20	20	40	44	65	25	2.0	M6
PLB800K30	30	50	46	40	25	2.4	M6
PLB800K40	40	50	52	40	30	2.0	M6
PLB800K50	50	50	59	40	35	1.6	M6
PLB800K100	100	60	72	30	45	1.8	M6
PLB800K150	150	110	62	14	35	3.0	M6
PLB800K200	200	110	71	14	45	2.5	M6
Un 1000Vdc							
PLB1000K15	15	40	51	80	23	2.2	M6
PLB1000K25	25	50	54	55	25	2.4	M6
PLB1000K40	40	50	69	55	35	1.8	M6
PLB1000K50	50	60	69	40	33	2.3	M6
PLB1000K80	80	60	86	40	45	1.8	M6
PLB1000K100	100	110	66	20	30	4.0	M6
PLB1000K150	150	114	81	20	45	3.0	M8

编码: PLB800K20-M6-40 "M6" = output 40="Length"